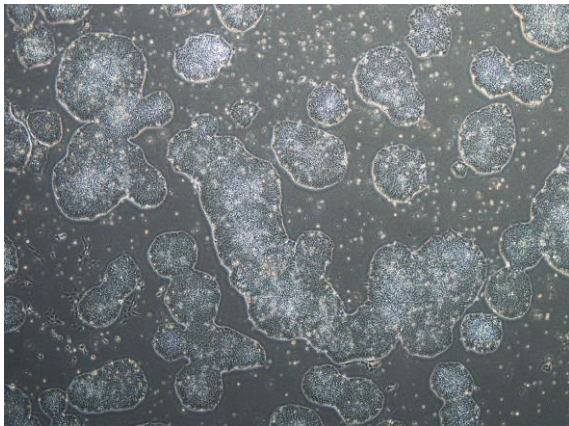
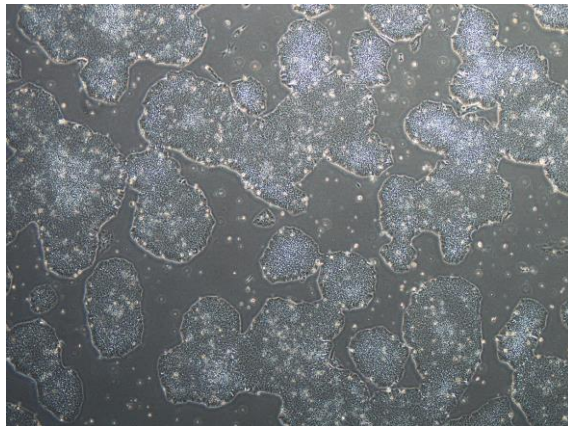


## 【 CiRA-j-1235 】 Morphology of iPSC colonies

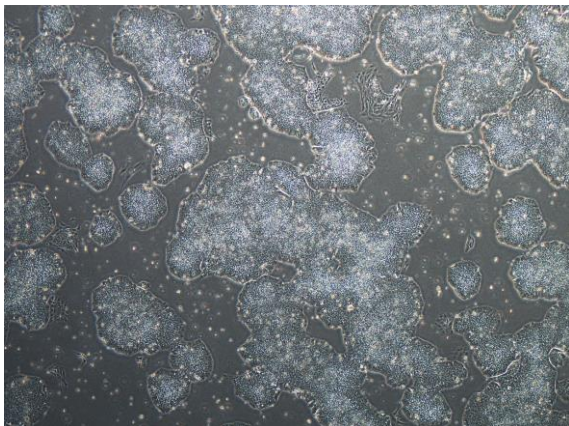
CiRA-j-1235-A: passage-3



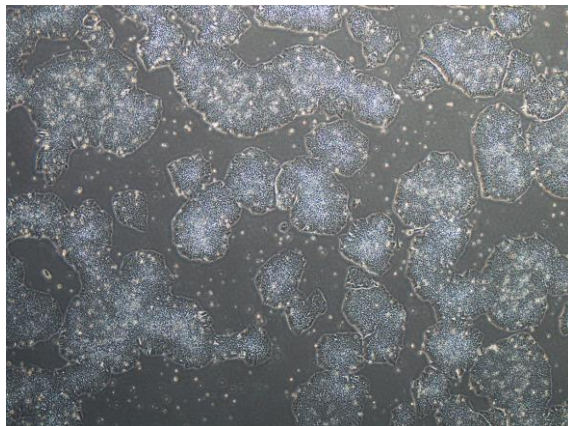
CiRA-j-1235-B: passage-3



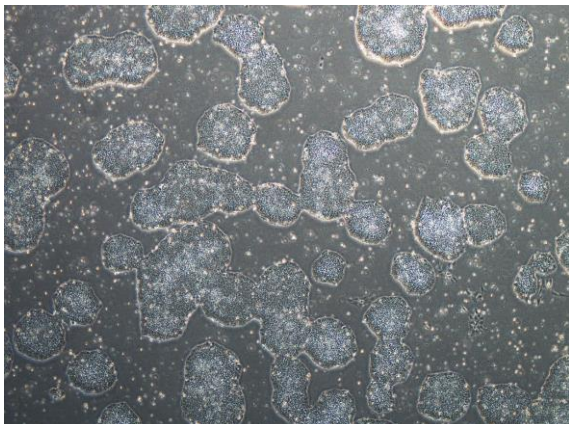
CiRA-j-1235-C: passage-3



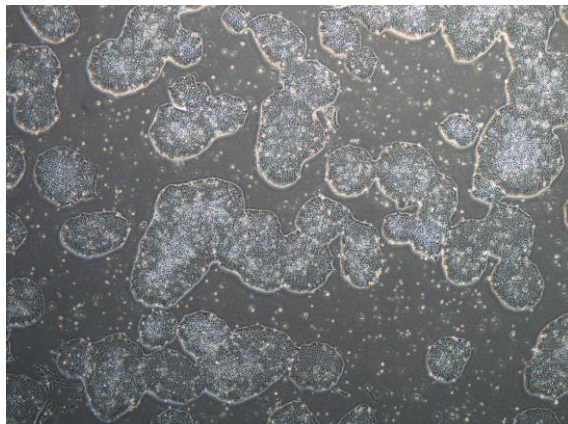
CiRA-j-1235-D: passage-3



CiRA-j-1235-E: passage-3



CiRA-j-1235-F: passage-3



( All images were captured at 4x magnification )